

THE DENTAL
SOLUTIONS
COMPANY™



SiroLaser Advance Plus

A Plus for your practice

dentsplysirona.com

Subject to technical changes and errors in the text; Order No. A91100-M45-C056-01-7600, Printed in Germany, Dispo No. 4603, OEW17 WS 0217/VO

Procedural Solutions

Preventive
Restorative
Orthodontics
Endodontics
Implants
Prosthetics

Enabling Technologies

CAD/CAM
Imaging
Treatment Centers
Instruments

Dentsply Sirona

Sirona Dental Systems GmbH
Fabrikstraße 31, 64625 Bensheim, Deutschland
dentsplysirona.com

THE DENTAL
SOLUTIONS
COMPANY™



Time for laser treatment

Effective germ reduction. Minimally invasive surgery. Support during CEREC restorations. Even treatment of herpetic lesions and medical bleaching. For patients, the use of lasers means less post-operative pain and therefore less need for medication. Satisfied patients are the best way to ensure success.

The new SiroLaser Advance Plus by Dentsply Sirona enhances your practice. SiroLaser Advance Plus is designed for experts and less experienced users alike. With SiroLaser Advance Plus, you'll enjoy intuitive and versatile use to fully concentrate on each patient.

INTUITIVE HANDLING

- Touchscreen navigation
- Clear user prompts
- Self-explanatory menu icons

IMMEDIATE TREATMENT

- Pre-set programs for key applications
- Optional help menu for each pre-set program to assist less experienced users
- Sterile delivered disposable fibers

INDIVIDUAL CUSTOMIZATION

- 24 programmable applications
- User profiles, each with a personal access code

VERSATILE OPERATION

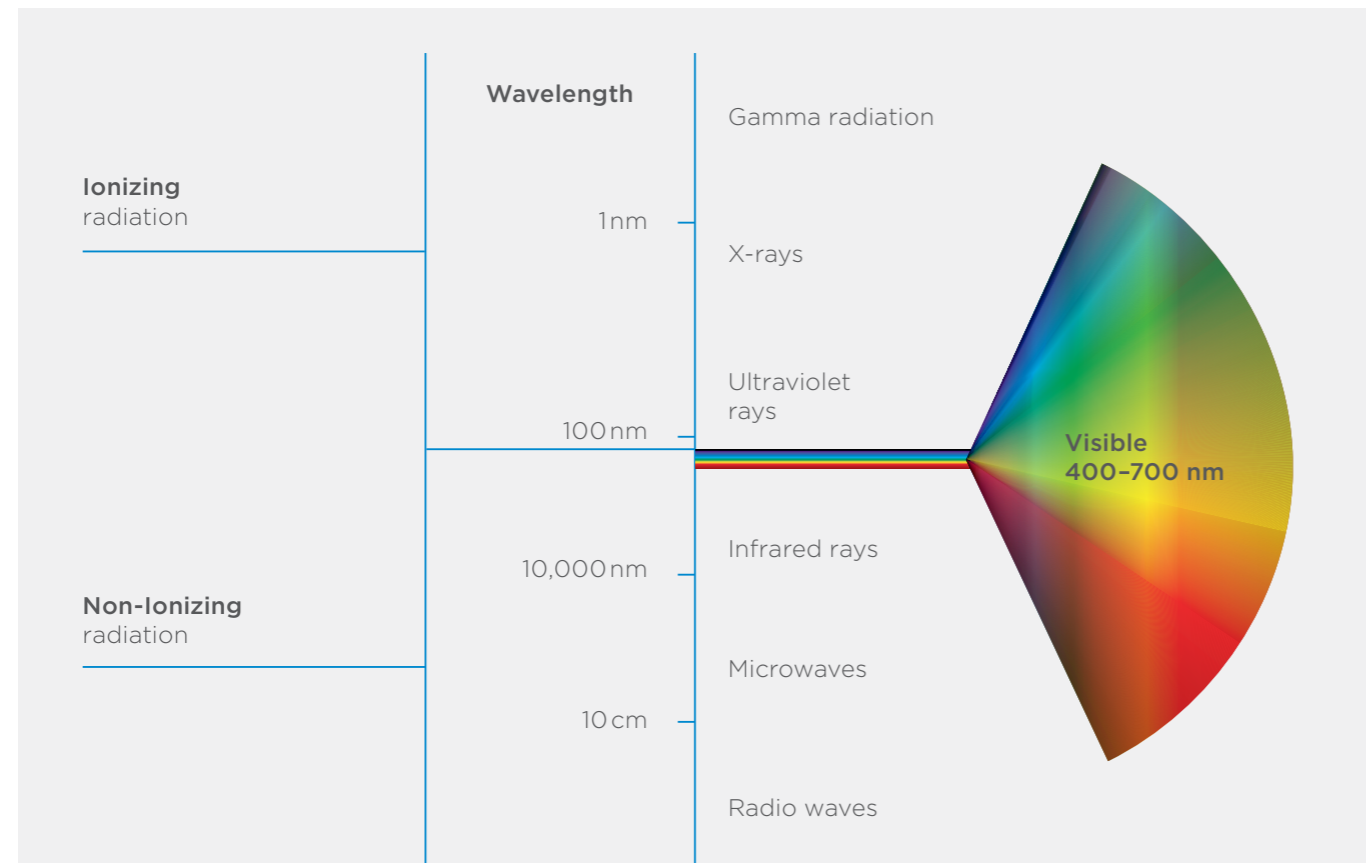
- Ergonomic handpiece with light-touch finger switch
- Battery-operated for greater portability
- Additional 660nm diode for Low-Level-Laser Therapy (LLLT)



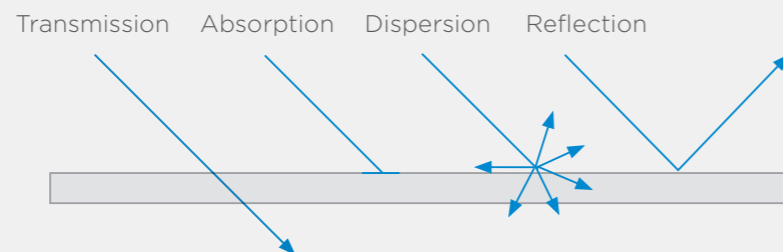
How does a diode laser work?

A diode laser uses one or more laser diodes (semiconductors) as a medium to generate the laser beam. The wavelength of the rays is the decisive factor. What a laser can do depends on the wavelength, which determines absorption, meaning the reaction of the light with tissue. This means that the laser energy is transferred to the tissue. Depending on the wavelength, different indications are covered. The wavelength depends on the kind of laser, i.e. whether a crystal, gas, or semiconductor is used to generate the rays. In a diode laser, the laser beam is generated using a laser diode.

The electromagnetic spectrum



Depending on wavelength and composition of the tissue, there are different forms of reactions.



SiroLaser Advance Plus – easy operation and useful features

You just concentrate on your treatment – we take care of everything else.

Characteristics/benefits	
Sterile disposable fibers (EasyTips)	Before every treatment simply stick one of the practical EasyTips on the handpiece of the SiroLaser Advance Plus – and you can then start the treatment directly. All of this without time-consuming assembly steps, without wrapping and without sterilization. All fibers are made in Germany.
Therapy light guides (MultiTips)	For soft laser applications and medical bleaching (e.g. as endodontic follow-up treatment).
More than 20 preset programs	For every treatment, there is already a preset program. You simply select the desired treatment on the touchscreen and start working. In addition, the Help function assists you to administer the treatment properly.
Six favorites can be selected	There are some treatment types that you perform more frequently than others. To avoid the need to scroll through all of the programs, you can conveniently configure your individual home screen.
Application memory	The last 50 applications of each user are saved by the device and can conveniently be retrieved from the USB port.
Individual user profiles	You may have several people in your practice who use the SiroLaser Advance Plus for treatment. No problem, since up to 6 password-protected user profiles can be adapted individually to suit your needs.
Integrated battery	Full mobility and flexibility. The battery charges while you are working.
Intuitive user interface	The user interface is designed so intuitively that you will immediately find what you are looking for.
Handpiece with integrated finger switch	The integrated finger switch makes an additional foot pedal obsolete. Auto-clavable stainless steel handpiece sleeve.
Delegatability*	You can delegate applications in soft laser therapy to your practice assistant.
Flexible laser activation	Integrated finger switch at the handpiece or optional wireless foot control.
Quickly ready for use	Standby mode for immediate availability without switching off the device.
Technical safety checks*	A technical safety check is required by law. For the SIROLaser Blue, it is required only every two years – for other providers, generally once a year.
Warranty	Two years.

* Depends on country-specific regulations.

Please note the following guidelines:



A plus for your practice

Dental diode lasers deliver clear benefits over conventional methods of treatment.

SiroLaser Advance Plus is a diode laser having an infrared and a red diode. The established infrared 970nm wavelength covers all indications in the field of soft-tissue surgery, periodontology and endodontics. The additional red 660nm diode is used for what are known as "Low-Level-Laser Therapy (LLLT)". This enables it to cover more than 20 indications - and therefore versatile possibilities for application in your practice routine.

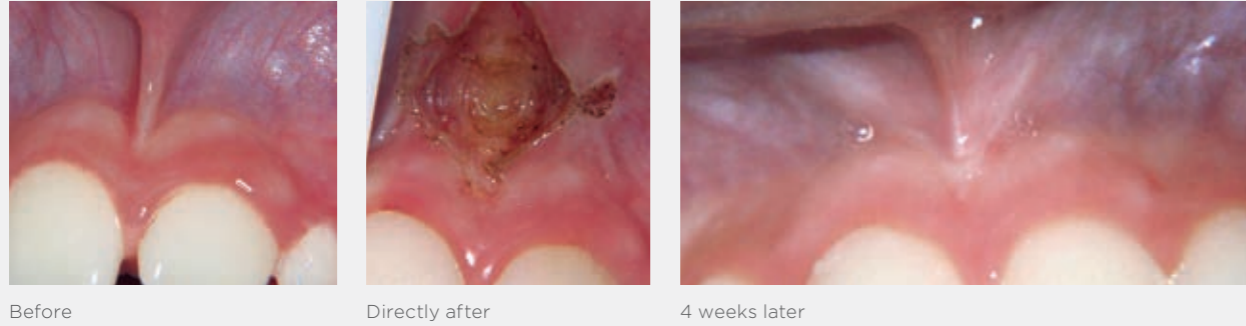
Thanks to wireless battery operation, you can move between rooms all day long, without a hitch. Featuring individual settings for up to six users, SiroLaser Advance Plus also comes with a comprehensive equipment package. Enjoy automatic treatment documentation. Manage your preferences with ease. Performance meets comfort: SiroLaser Advance Plus.



SiroLaser Advance Plus in practice

Frenectomy

- Interventions involving low levels of pain and bleeding
- Immediate hemostasis
- No sutures and less scars, accelerated wound healing
- Often no more than surface anesthesia required, virtually no post-operative discomfort



Fibroma

- Removal of the mucosal lesion
- Direct coagulation without sutures
- Non-irritated wound area with no secondary bleeding
- Reduced scar formation



Gingivoplasty

- Easy visualization of clean contours
- Interventions with low bleeding levels
- Virtually no post-operative problems



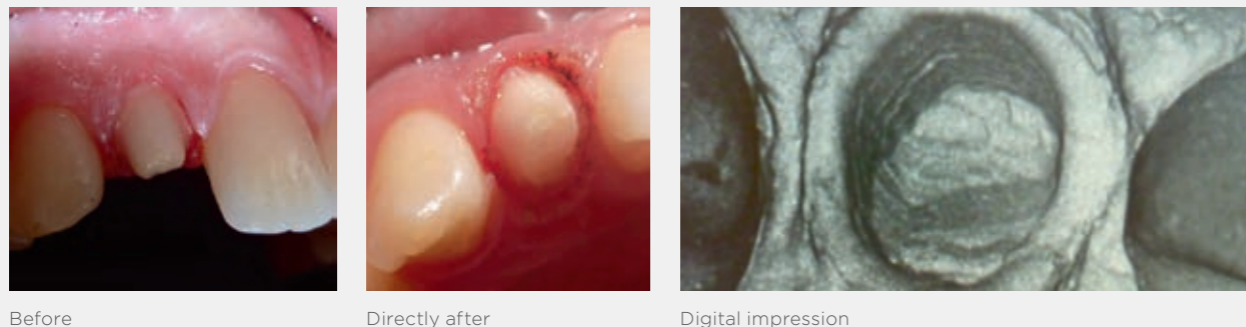
Endodontic germ reduction

- Laser beams penetrate much deeper into dentinal tubules than conventional rinses
- Better long-term prognosis for endodontic treatments



Tissue management

- Retraction cords no longer required
- Clearly defined 'clean' and 'dry' preparation edges
- Optimal technique for taking dental impressions



All indications at a glance

Surgery	Endodontics	Periodontology	Other	
Abscess	Implant uncoverly	Endodontic germ reduction	Periodontic germ reduction	Aphthous ulcers
Epulis	Incisions/excisions	Gangrene germ reduction	Peri-implantitis	Desensitization
Fibroma	Operculectomy	Pulpotomy	etc.	Hemostasis
Frenectomy	Gingival troughing	etc.		Herpes
Gingivectomy	etc.			Medical Bleaching*
Gingivoplasty				Soft laser therapy

* e.g. following an endodontic treatment; no predefined treatment program



Start now and become a laser expert

The SiroLaser Advance Plus is easy to operate and includes useful features. Nevertheless, courses and training seminars are necessary to enable you to complete your treatment safely and successfully. We offer various training events at which you can learn the treatment with the SiroLaser Advance Plus or the principles of working safely with the laser. For more information, see dentsplysirona.com/laser-platform or ask us.

Laser Platform

To stay informed about the latest information visit our new laser platform online: www.dentsplysirona.com/laser-platform

The highlight of our laser platform is the forum. Here you can also discuss any questions that arise when using your laser or regarding laser therapy in general with other users and specialists.

In addition you will find here clinical articles, photos and films, case studies, news about future events



Your contact person
Nicole Bohlken
Training consulting
akademie@sirona.com

Technical data

Technical data	
Wavelength and operating performance	660 nm +/-5 nm / 25, 50 and 100mW (CW) 970 nm -10/+15 nm / 0.2 - 7.0 W (CW); -14W (Peak Pulse)
Laser operating mode	Continuous wave, chopped mode, peak pulse
Frequency	1-10,000Hz
Duty cycle	Variable
Weight	- 1.3kg (incl. handpiece and battery)
Dimensions	- 19.7cm x 18.2cm x 18.9cm

For more information, see www.sirona.com/laser

Also almost unlimited in their scope - the SiroLaser Advance Plus accessories

Accessories	Ref.
Handpiece sleeve with keypad	64 87 784
EasyTip 320 µm (25 pieces)	64 98 062
EasyTip 200 µm (25 pieces)	64 98 484
EasyTip 200 µm Endo (25 pieces)	65 35 905
MultiTip 8 mm, therapy light guide	65 41 465
MultiTip 4 mm, therapy light guide	65 41 499
Optic protective cap for handpiece (5 pieces)	65 79 580
Fibercutter	60 91 669
EasyBend - Bending tool	65 44 097
Wireless foot control	62 56 841
Laser safety goggles for users SiroLaser Advance Plus	65 41 564
Laser goggles for patients SiroLaser Advance Plus	65 41 523
Laser safety goggles for eyeglasses wearers SiroLaser Advance Plus	65 41 572
Laser loupe glasses flip-up with exchangeable lenses (magnification: 3.0x; working distance: 400 mm)	66 25 177
Laser loupe glasses flip-up with exchangeable lenses (magnification: 3.0x; working distance: 350 mm)	66 25 169

SiroLaser Advance Plus Ref.-No. for the following countries: France 65 40 764; Switzerland 65 40 756; Finland 65 40 715; Norway 65 40 715; Sweden 65 40 715; Denmark 65 40 723; ROW 65 75 505. Further countries on request.

Scope of delivery

SiroLaser Advance Plus incl. stainless steel handpiece with integrated finger switch
Battery pack (already mounted)
Additional handpiece sleeve for alternating operation
Demo set of disposable, non-sterile fiber tips: 2 x EasyTip 320 µm, 2 x EasyTip Endo, 2 x EasyTip 200 µm
Combined bending tool
Fibercutter
3 laser safety goggles (for dentist, dental assistant, and patient)



EasyTips and MultiTips: Sterile disposable fibers and therapy light guides for various applications



Laser safety goggles for users and patients